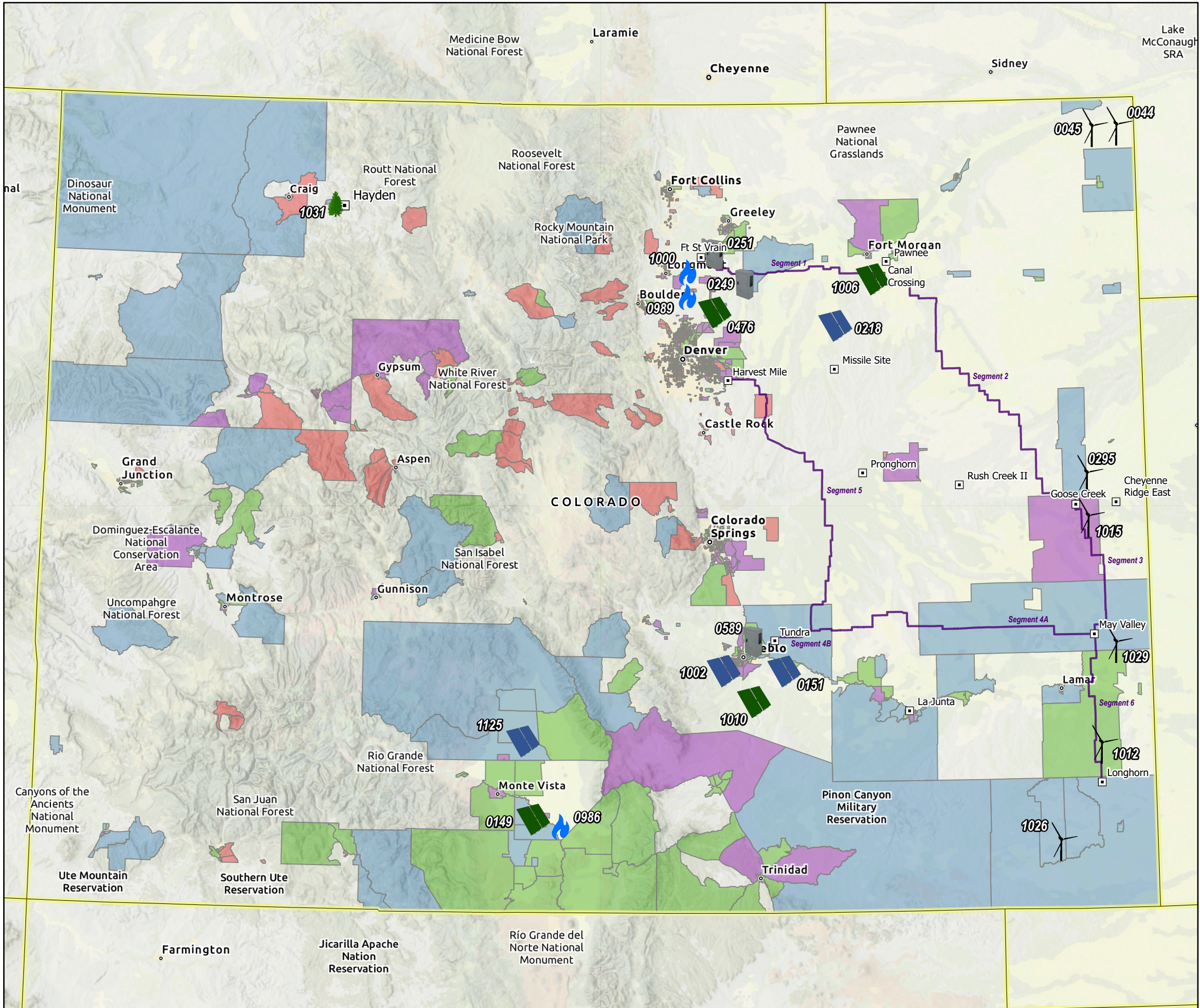


PSCo 2022 All-Source RFP Preferred Plan

Disproportionately Impacted Communities



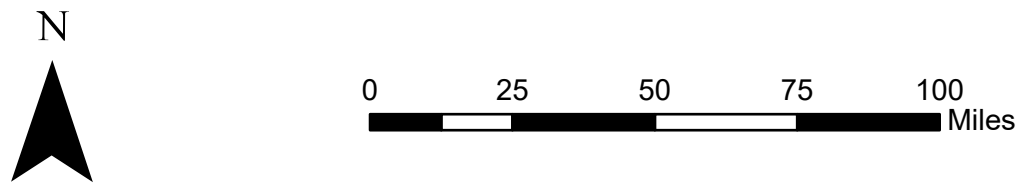
Substation
 Colorado's Power Pathway

CDPHE D.I. Community
 Housing Burden
 Low Income
 People of Color
 More than one category

Generation Type
 Gas
 Solar
 Solar + Storage
 Storage
 Wind

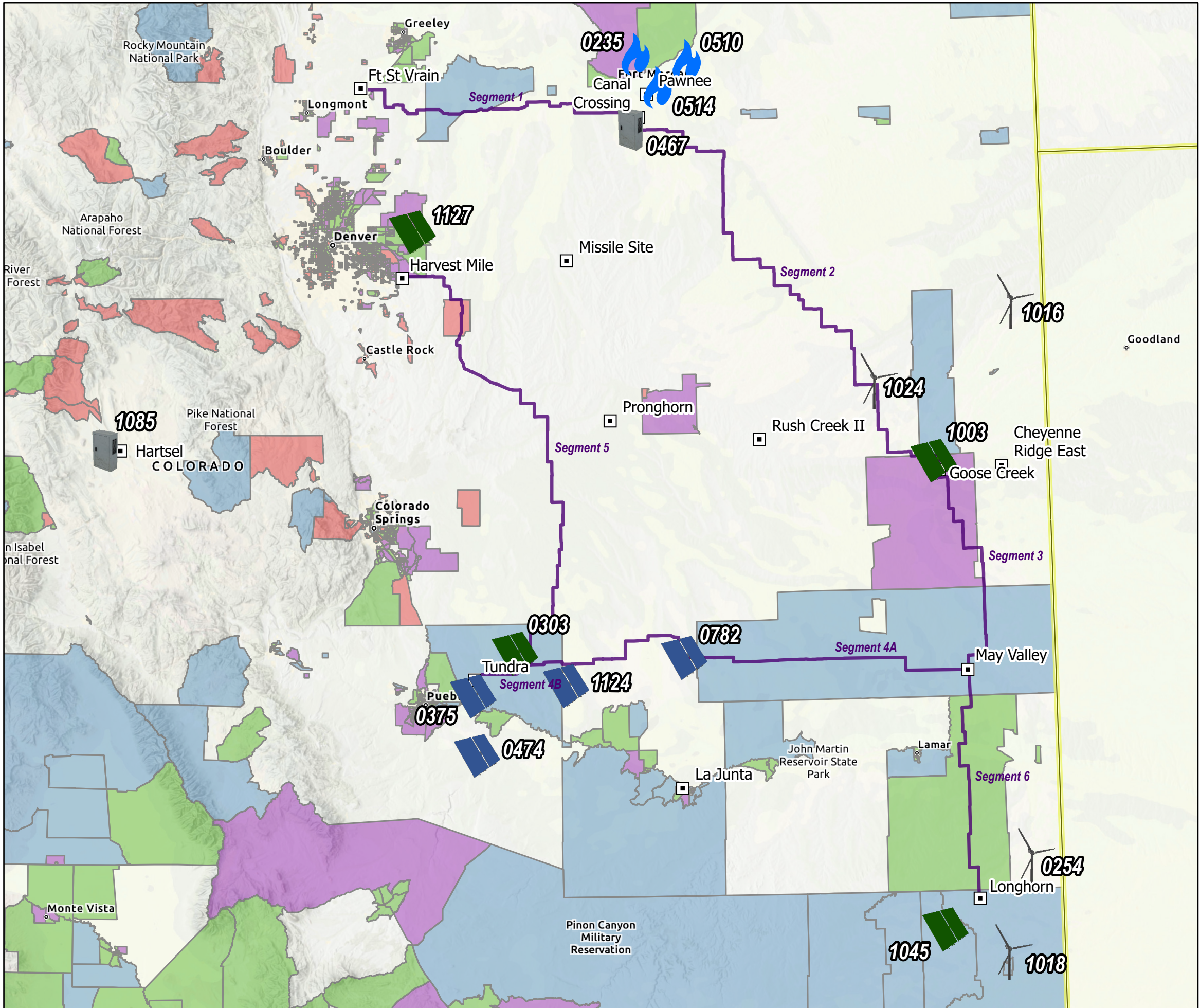
Bid ID	Gen Type	CDPHE D.I. Community Category
0044	Wind	Not Affected
0045	Wind	Not Affected
0149	Solar + Storage	Low Income
0151	Solar	Not Affected
0218	Solar	Not Affected
0249	Storage	Not Affected
0251	Storage	Not Affected
0295	Wind	Low Income
0476	Solar + Storage	Not Affected
0589	Storage	People of Color
0986	Gas	More than one
0989	Gas	Not Affected
1000	Gas	Not Affected
1002	Solar	Not Affected
1006	Solar + Storage	Not Affected
1010	Solar + Storage	More than one
1012	Wind	More than one
1015	Wind	People of Color
1026	Wind	Low Income
1029	Wind	Low Income
1031	Biomass	Not Affected
1125	Solar	Low Income

- Notes:
1. Colorado Department of Public Health & Environment (CDPHE)
 2. Displays disproportionately impacted communities (DIC) as defined by the Environmental Justice Act (HB21-1266), which are census block groups where greater than 40% of households are low income, housing cost-burdened, or include people of color.
 3. Total number of people living in a Disproportionally Impacted Community = 2,398,348.



PSCo 2022 All-Source RFP Backup Bids

Disproportionately Impacted Communities



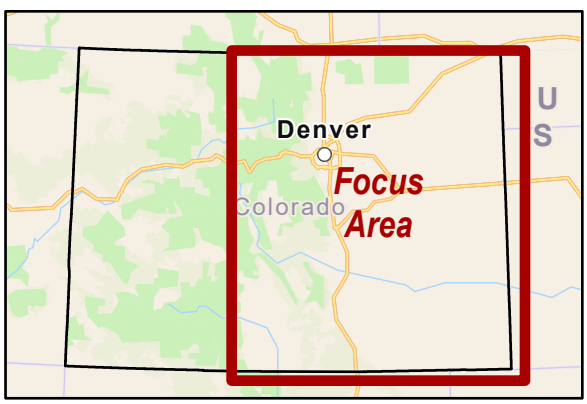
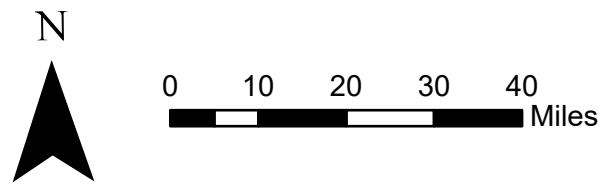
Legend

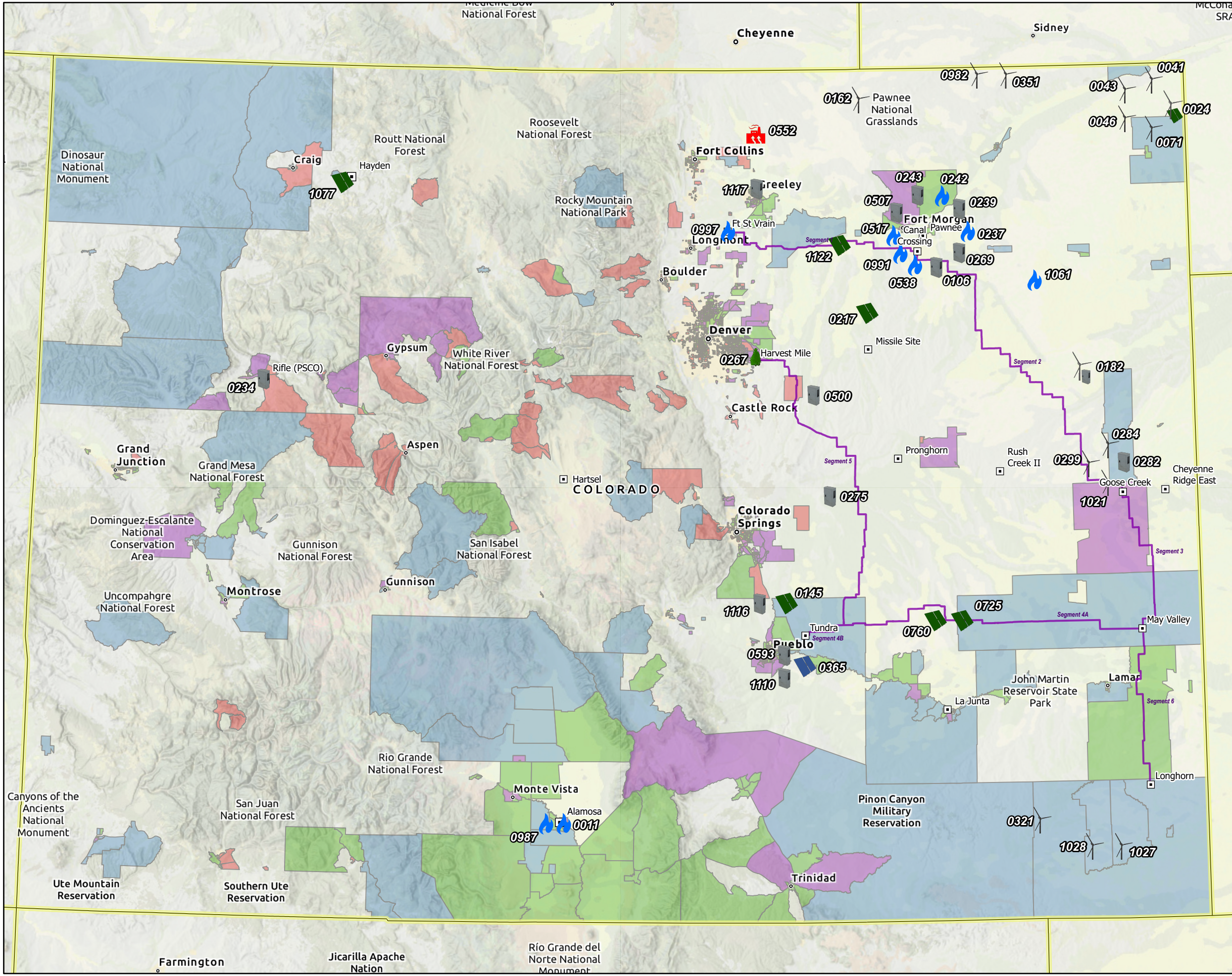
- Substation (Square icon)
- Colorado's Power Pathway (Purple line)
- CDPHE D.I. Community:
 - Housing Burden (Red)
 - Low Income (Blue)
 - People of Color (Purple)
 - More than one category (Green)
- Generation Type:
 - Gas (Flame icon)
 - Solar (Solar panel icon)
 - Solar + Storage (Solar panel with battery icon)
 - Storage (Battery icon)
 - Wind (Wind turbine icon)

Bid ID	Gen Type	CDPHE D.I. Community Category
0510	Gas	More than one
0514	Gas	More than one
0235	Gas	More than one
0782	Solar	Not Affected
1124	Solar	Not Affected
0474	Solar	Not Affected
0375	Solar	Low Income
1045	Solar + Storage	Low Income
1127	Solar + Storage	More than one
1003	Solar + Storage	People of Color
0303	Solar + Storage	Low Income
0467	Storage	Not Affected
1085	Storage	Not Affected
1024	Wind	Not Affected
1018	Wind	Low Income
1016	Wind	Not Affected
0254	Wind	Not Affected

Notes:

1. Colorado Department of Public Health & Environment (CDPHE)
2. Displays disproportionately impacted communities (DIC) as defined by the Environmental Justice Act (HB21-1266), which are census block groups where greater than 40% of households are low income, housing cost-burdened, or include people of color.
3. Total number of people living in a Disproportionally Impacted Community = 2,398,348.



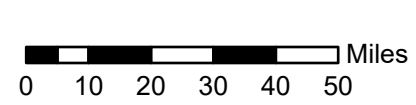


Bid ID	Gen Type	CDPHE D.I. Community Category
0011	Gas	More than one
0024	Wind + Solar + Storage	Not Affected
0041	Wind	Not Affected
0043	Wind	Not Affected
0046	Wind	Not Affected
0071	Wind	Not Affected
0145	Solar + Storage	Low Income
0162	Wind	Not Affected
0182	Wind + Storage	Not Affected
0217	Solar + Storage	Not Affected
0234	Storage	Housing Burden
0237	Gas	More than one
0239	Storage	More than one
0242	Gas	More than one
0243	Storage	More than one
0267	Biomass	People of Color
0275	Storage	Not Affected
0282	Storage	People of Color
0284	Wind	Low Income
0299	Wind	Low Income
0321	Wind	Low Income
0351	Wind	Not Affected
0365	Solar	More than one
0500	Storage	Not Affected
0507	Storage	More than one
0517	Gas	More than one
0538	Gas	More than one
0552	Geothermal	Not Affected
0593	Storage	People of Color
0725	Solar + Storage	Not Affected
0760	Solar + Storage	Not Affected
0982	Wind	Not Affected
0987	Gas	More than one
0991	Gas	Not Affected
0997	Gas	Not Affected
1021	Wind	Not Affected
1027	Wind	Low Income
1028	Wind	Low Income
1061	Gas	Not Affected
1077	Solar + Storage	Not Affected
1110	Storage	People of Color
1116	Storage	Housing Burden
1117	Storage	People of Color
1122	Solar + Storage	Not Affected
1187	Storage	Not Affected
1171	Storage	Not Affected

Notes:
 1. Colorado Department of Public Health & Environment (CDPHE)
 2. Displays disproportionately impacted communities (DIC) as defined by the Environmental Justice Act (HB21-1266), which are census block groups where greater than 40% of households are low income, housing cost-burdened, or include people of color.
 3. Total number of people living in a Disproportionately Impacted Community = 2,398,348.

PSCo 2022 All-Source RFP Bids in All Other Portfolios

Disproportionately Impacted Communities



Date: Sept 2023 Created By: M.Rodriguez, Siring & Land Rights
 Path: R:\Project Warehouse\Regulatory\DI Communities & RFP\Pro Projects\CDPHE.aprx

Substation	Colorado's Power Pathway	Biomass	Solar	Wind
CDPHE D.I. Community	People of Color	Gas	Solar + Storage	Wind + Solar + Storage
Housing Burden	More than one category	Geothermal	Storage	Wind + Storage
Low Income				

